

## Tracks Sequence of Indian Air Wheels Climate Propagating Trains and Growing Attacks of Eurasian Climate Trains on Pakistan, Europe, Western Russia Galloping towards Eastern Asia

Malik Muhammad Nazeer  
Islamabad, Pakistan

### Abstract

Global climate is mainly maneuvered by naturally created Global Air Conditioner (GAC) with Indian Air Wheels (IAW) as its evaporator-condenser and water irrigating only the Pakistan as its Freon. Unfortunately, this Freon is mostly blocked with World Bank (WB) blunders and thus 35.5% heat is blocked from annual global heat dissipation budget and is being added yearly to the Earth Globe. The current addition of this heat into the Earth Globe by IAW and the already buildup of ever rising Global Heat Content (GHC) and Temperature (GHT) are both continuously launching always growing terrible catastrophic attacks over all the Globe, both jointly and individually. The periods, patterns and sequence of these attacks sponsored by Freon blockage are elaborated in this work along with route of Eurasian Climate Trains (ECT) perishing Pakistan, Europe, western Russia with heatwaves and wildfires and rushing towards Eastern Russia, China, Mongolia and Korea etc. drying their water for heat waves and wildfire attacks in the near future, while at the end water absorbed from Pacific by the heated IAW rains heavily with flash floods in India, Bangladesh and Pakistan. The route and trade freights of these trains are discussed to draw the attention of the world leaders towards actual solution of this Global Climate Dilemma through unique GAC, the lone alone global safety and peace mediator. This GAC needing human mobilization can successfully revert all Global Climate Calamities (GCC) to the most beneficial opportunities in about 57 years restoring 1960 climate status through blockage of annual heat addition and draining 940 ZJ already heaped GHC and thereafter, handling all anticlimactic contributions due to human population growth for centuries. This is the only way, while all other measures concentrate on blockage of only 13.62% of only the current heat input and never able to drain the heap of 940 ZJ. All stakeholders in GCC Control, particularly the UNO, NASA, World Bank, all Scientific Institutions, G8 countries etc. are all alerted again of the forthcoming unimaginable horrible and terrible disasters and diverted their attention towards GAC earliest mobilization.

**Keywords:** Global Climate Calamities Control, Pakistani Irrigation Based Unique Global Air Conditioner, Indian Air Wheels, Indian Triggered and Boosted North Atlantic Hurricanes, Catastrophic Eurasian Climate Train

### Introduction

Almost all the Global Climate Calamities (GCC) are continuously rising up and up at very high speed, since 1973 (Nazeer, 2020a) and always with some new extra ordinary records and terrible glimpses. This time (year 2022) has experienced extremely terrible as well as horrible nightmares of extreme heatwaves, widespread wildfires, perishing wind, rains, hails and snow storms, hurricanes, tornados, suddenly attacking scarcest monster disastrous flash floods washing and rolling away the vehicles along with passengers, huts and buildings along with residents, bridges along with traversing transports, roads with traffics, dams with all structures, mountains and landslides with all occupants, avalanches, earthquakes, tsunamis etc. These scariest calamities are very soon going to be quite common and too much frequent with the present growth of GHC and GHT. The death toll which used to be in hundreds, has risen to millions and soon will be in billions and trillions with no stoppage here at all. Similarly

financial losses are also building up and up more rapidly. The views of scariest floods are extremely horrible and it seems that flow in place of water is that of vehicles, houses, huts, buildings, bridges, boulders and their wreckages. The snowstorms are no less disastrous as these are catching and overpowering all movements and hundreds, rather thousands of peoples are buried alive to death in their vehicles due to impossible such a huge rescue operation in the scenario of widespread unsurmountable obstacles. This all is the aftermath of persistent annual growth and horrible stature of GHC and GHT due to the implementation of their major (86%) promoter, the Indus Basin Water Treaty (IBWT) of 1960 sponsored by World Bank, USA, UK, France, Germany, Australia etc. This diverted water of 3 eastern Pakistani rivers irrigating southeastern Pakistan to India which was the Freon of Divinely created and operated (GAC-1) with 14.235 ZJ heat dissipation potentials, a part of unique Global Air Conditioner (GAC) and thus it has crippled GAC-1 and blocked the global heat from its normal transport to Troposphere. This heat is continuously being added annually to GHC, only due to the said water diversion. This GAC also has Divinely created and fully facilitated two more parts GAC-2 and GAC-3 mutually dependent with 9.893 ZJ and 15.78 ZJ heat dissipation potentials respectively, but these need mobilization by the human beings. These two would have come into operation by 1980 if WB in its 2<sup>nd</sup> tragic move had not misguided Pakistan in its recommendations for development of water and power resources of Pakistan. These both moves resulted in disaster in Pakistan along with ever mounting terrible nightmare of GCC for the whole Globe. Other than many components and parts of the said unique and most vital GAC on all over the Earth Globe, it has two unique and absolutely indispensable parts; the Indian Air Wheels (IAW) created only in India and Pakistan, mainly at Chulistan, Rajasthan and Thar deserts (Nazeer, 2020a; Nazeer, 2019a; Nazeer, 2019b; Nazeer, 2019c; Nazeer, 2020b; Nazeer, 2019d; Nazeer, 2020c; Nazeer, 2020d) of Indian Subcontinent as its evaporator and condenser and the water irrigating only Pakistan as its Freon.

The above stated total heat thus blocked from dissipation and misdirected to the Earth Globe by all means is almost 41.1% (16.48 ZJ) of annual global heat dissipation budget (40.098 ZJ). In this 35.5% (14.235 ZJ) share is due to IBWT persistent blockage of Freon of the said GAC-1 and 5.6% (2.245 ZJ) is by all other contributors. Thus, almost 940 ZJ heat has been added to GHC since 1965. This global heat nightmare has launched two prong progressive attacks on Earth Globe and its inhabitants. One is by the current heat input with its bases mainly on the lands, especially the deserts in tropical regions diverted from its dissipation as a result of IBWT crippling of GAC-1 and the 2<sup>nd</sup> is from the current heat storage heap with its bases in the water of the oceans. IAW supported by global atmospheric movement are the carrier, supplier, transporter of both these heats categories and also their products with easy, quick and direct heat transport mainly of land based part, while transport of oceans based heat is relatively slow and indirect in form of heat contents in water vapors. The first one mostly results in draughts, heatwaves, wildfires, rise of GHT, storms, hurricanes, tornados and avalanches and the 2<sup>nd</sup> one results in scariest rains, monster flash floods with land and mountains slides etc. in the absence of above stated Freon. Wildfires and GHT along with melting of polar and glaciers ice also lead to tsunamis, earthquakes, volcanic eruptions etc. These attacks are both independent and as joint venture. In the absence of above stated Freon, the heat of first one is finally added to GHC and that of 2<sup>nd</sup> is mainly transported to Troposphere through water evaporation and precipitation cycle. This is mostly part of the stable part (58.9%) of said annual heat dissipation budget. The net annual heat balance of the two activities is the growth of GHC by 16.48 ZJ.

The records breaking heatwaves resulting into wildfires are the aftermaths of terrible water scarcity, the Freon of GAC as a result of World Bank (WB) above stated blunder of IBWT implementations boosted by its 2<sup>nd</sup> blunder of 1967 tragic misguidance in development of water and power resources of the (then West) Pakistan (Nazeer, 2020b). The ample irrigation

water would have absorbed heat in its evaporation without raising the temperature, rather lowering it below the fire flash point and thus avoiding its boost up too by thus controlling of wildfire hazards enroute. This would have also been resulted in transportation of large quantity of heat enroute to Troposphere with cycling of the evaporation and precipitation again and again, almost thousands of times with the same water collected from Pakistan. Hence, if IAW were fully saturated with water vapors in Pakistan, it would have resulted in pleasant weather and suitable rains enroute and if not, then heatwaves and wildfires with all terrible disastrous aftermaths. Thus, in brief additional heat diverted to the Earth and further boosted by wildfires is all constantly being added and facilitated by the above referred two tragic moves of WB (Nazeer, 2020b) in place of its pumping to Troposphere. These IAW move to Sahara heat treasury of Africa and collect even more additional heat from this too. The mechanism in this is that if water is made available in IAW from Pakistan, it absorbs heat during evaporations and then dissipates it in Troposphere during their precipitations and this process repeats thousands of times on IAW tracks. If not, then the heat thus blocked from dissipation to Troposphere is carried on and handed over to Earth Globe and it raises the temperature and enforces heatwaves, wildfires and all climate calamities all over the Earth Globe. As discussed in references (Nazeer, 2020a; Nazeer, 2019a; Nazeer, 2019b; Nazeer, 2019c; Nazeer, 2020b; Nazeer, 2019d; Nazeer, 2020c; Nazeer, 2020d; Nazeer, 2022a; Nazeer, 2022b), almost all the climate calamities all over the Earth Globe has the roots almost only in blockage of Freon of GAC (water for optimal irrigation of Pakistan) and the solution of all these problems is in optimal provision of only this Freon. All other components of GAC are out of human reach and are well, rather perfectly established by the nature itself, while it is God's extreme mercy and blessings that He has put solution of all these problems in one and only one, the said Freon and given this switch in the human hands with complete provisions of all needed prunes and cronos and made these calamities control as too many huge opportunities of agriculture products, pleasant weather and clean energy output to benefit from these through operating this switch. Thus, Pakistan's irrigation providing Freon to GAC is the heart of Earth Globe and has two clear opposite roles in global climatology,

- i. boosting all calamities over all the global with crippled irrigation and
- ii. boosting of all pleasant weather and suppression of all calamities in reverse gear throughout the Globe with its optimum supplies.

Surely 56-58 years will be needed to deplete and clear out the already heaped GHC and settle down the overshoot of GHT by it before its complete control on all allied issues. The estimate of this controlling time is with the assumption that all the needed infrastructures will be started immediately and completed by the year 2040. The growth and blooming of GCC is promoted by the heap of GHC and its new annual addition and these are carried and guided to their targets by solar heat generated IAW. The sequence and patterns of activities of these IAW and allied atmospheric flow in time and space are discussed below to elaborate the role of Pakistan in global climatology. The aftermaths of Freon deprived IAW-n, the part of IAW active on Northern and that of IAW-s, its part active on Southern Earth Hemisphere were discussed in (Nazeer, 2020a; Nazeer, 2019a; Nazeer, 2019b; Nazeer, 2019c; Nazeer, 2022a), but IAW-e (Figure 1), the Eurasian parts remained untouched. The terrible, horrible and catastrophic aftermath of this part in form of Eurasian Climate Trains' (ECT) progressive terrible attacks in 2022 has urged to elaborate its mechanism and its near future possible smothering of the areas of the eastern Russia, China, Mongolia, Korea and Japan over and above the heavily heightening the disasters in areas already under its terrible attacks like Europe, Russia and Pakistan. Also, IAW activities boosting by critical periods of 37 years lunar modulations and resulting scariest flash floods and other terrible calamities all over the world, particularly intensive on the Southern Hemisphere has urged to discuss this too with the overall pattern of IBWT stricken IAW tracks sequence in time and space. The sequence and patterns of IAW

traversal over the tracks on the Earth Globe are jointly directed by solar, lunar and Venus gravitational traction, push of coastal winds, gusts of monsoon and centrifugal force due to earth polar rotation etc. as discussed below. It is worth to describe below the role of major drivers and navigators of IAW before their sequence and pattern over the Globe.

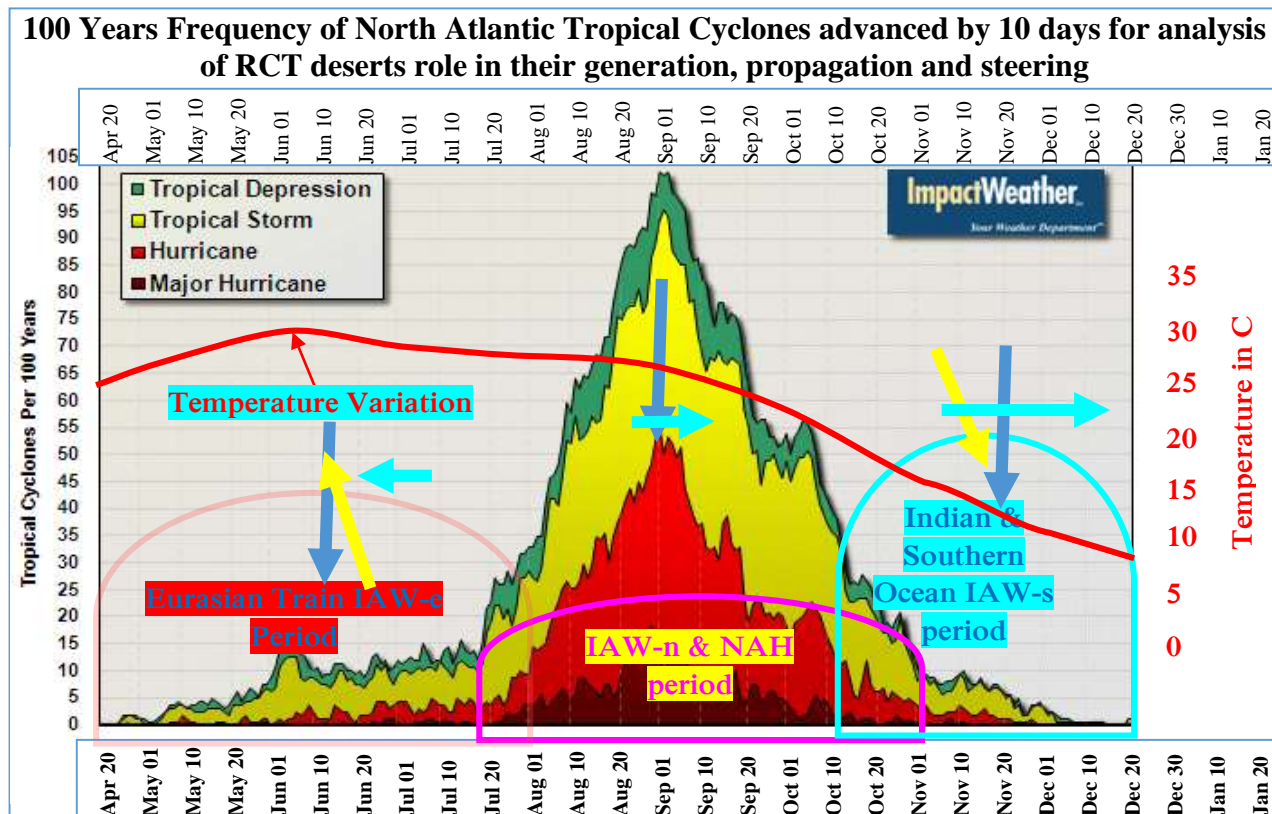


Figure 1

The 100 years frequencies graph of North Atlantic Major and normal Hurricane, tropical storms and depressions (Nazeer, 2022b) advanced by 10 days for its matching with IAW initiation parameters. The duration of these is divided in 3 overlapping sectors to distinguish the periods of 3 IAW mainly targeting the 3 different directions, locations and zones: 1) IAW-e to Eurasia, 2) IAW-n to all rest of Globe north of Equator, mainly NAH and Fareast storms, tornados and 3) IAW-s towards all the area of Globe south of Equator. The blue arrows indicate westward direction of IAW at start, yellow arrows show the direction of coastal winds and cyan arrows show the approximate solar traction direction and magnitude. During IAW-e, sea to land coastal wind is in 150° opposite phase towards north, thus pushing these towards north and not letting these to drift towards south. In the central portion, the IAW-n mainly with no coastal wind and its end with 30° southward is in phase with southward solar lateral traction while the last one, IAW-s is fully and forcefully directed by 30° southward in phase wind and full southward solar lateral traction. The temperature behavior and trend are shown by red line graph with scale on right side.

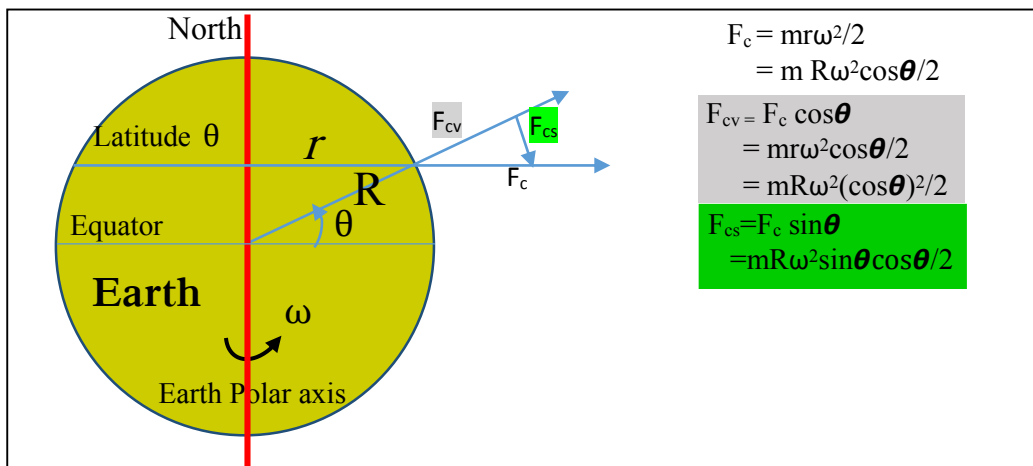
### Air Wheel Generation by Sun and the Earth

The air heated by the Sun radiations while elevating, carry on lagging towards west as its eastward absolute linear speed cannot increase to match with angular speed of the earth. This air loses its heat to the Troposphere and become cooler and heavier and thus starts descending. During upward journey, as elevation increases, the current angular speed decreases. Now, on return journey, as elevation decreases, the current angular speed increases and finally when this becomes zero, its angular speed becomes equal to that of earth. Thus, this air return back to the earth surface completing its vertical westward rolling Air Wheel, IAW of 10 km diameter with all its followers right from its departing the earth surface till reaching the Earth back. This

carries on collecting and rolling the air and water vapors from its path into its wheel and its linear speed at the earth surface is zero, unless these have any additional push, like that of monsoons or land to sea breeze or the easterlies etc. The minimum distance covered or traveled by IAW on earth surface in its one roll is  $10\pi = 31.42$  km at the latitude of CRT deserts and rolling period is about 1.28 minutes.

### Centrifugal Force on IAW due to Earth Polar Rotation

As shown in Figure 2, the centrifugal force due to earth polar rotation is  $F_c = m r \omega^2 / 2 = m R \omega^2 \cos \theta / 2$  at Earth latitude  $\theta$ , in other words, leaned at an angle  $\theta$  to the vertical towards Equator, to the south in Earth Northern Hemisphere. Its vertical component is  $F_{cv} = F_c \cos \theta = m r \omega^2 \cos \theta / 2 = m R \omega^2 (\cos \theta)^2 / 2$  and horizontal component towards Equator is  $F_{cs} = F_c \sin \theta = m R \omega^2 \sin \theta \cos \theta / 2 = m R \omega^2 \sin 2\theta / 4$ . Thus,  $F_{cs}$  is maximum at latitude  $45^\circ$  and zero at  $0^\circ$  and  $90^\circ$ , that is centrifugal lateral drift is maximum at  $45^\circ$  latitude and ceases at zero at Equator and at poles varying as  $\sin 2\theta$ , while its vertical component is maximum at Equator and zero at poles varying as square of  $\cos \theta$  where  $\theta$  is latitude. Due to this horizontal component all the tall trees with soft tissues lean towards Equator and air in the tropical regions is drifted towards Equator and with the Earth eastward rotation the direction of IAW and air is south-west in Northern and north-west in Southern Hemisphere. Thus, IAW in the northern tropical region experience south-west drift along with vertical as a result of Earth Polar eastward rotation.



**Figure 2.** The relations of vertical lift and south-ward drift components of centrifugal force due to Earth rotation about its polar axis at any North side latitude  $\theta$

### Role of Sun Gravitation Components

The Sun gravitation pull has two roles. One is due to earth daily rotation and thus atmospheric air and IAW going eastward with the earth are both pulled up and dragged westward as these are much loosely attached with Earth than water. The second is due to earth rotation around the Sun. This is considered in another way round, as the movement of the sun with respect to earth from latitude S- $23.45^\circ$  on 21<sup>st</sup> December to N- $23.45^\circ$  on 21<sup>st</sup> June and then back to S- $23.45^\circ$  on 21<sup>st</sup> December crossing Equator twice on 21<sup>st</sup> March and 21<sup>st</sup> September. The actual path of Sun in this case is a straight line but is shown as an ellipse in Figure 3 just to differentiate its North and South going movements and the components of Sun gravitation force on atmospheric air and the IAW in this case changing due to Sun location with respect to the site of CRT deserts and Pakistan on the earth. While moving towards N- $23.45^\circ$  latitude the vertical component of Sun gravitation on IAW increases and horizontal component towards south decreases and on its travelling back to S- $23.45^\circ$  the southwards component start increasing and vertical component carries on decreasing. The relative track of the Sun with

respect to the three regions of the IAW of Figure 1 are shown in Figure 3 in red, pink and the cyan colors along with their representative Sun gravitation components in direction and relative magnitude.

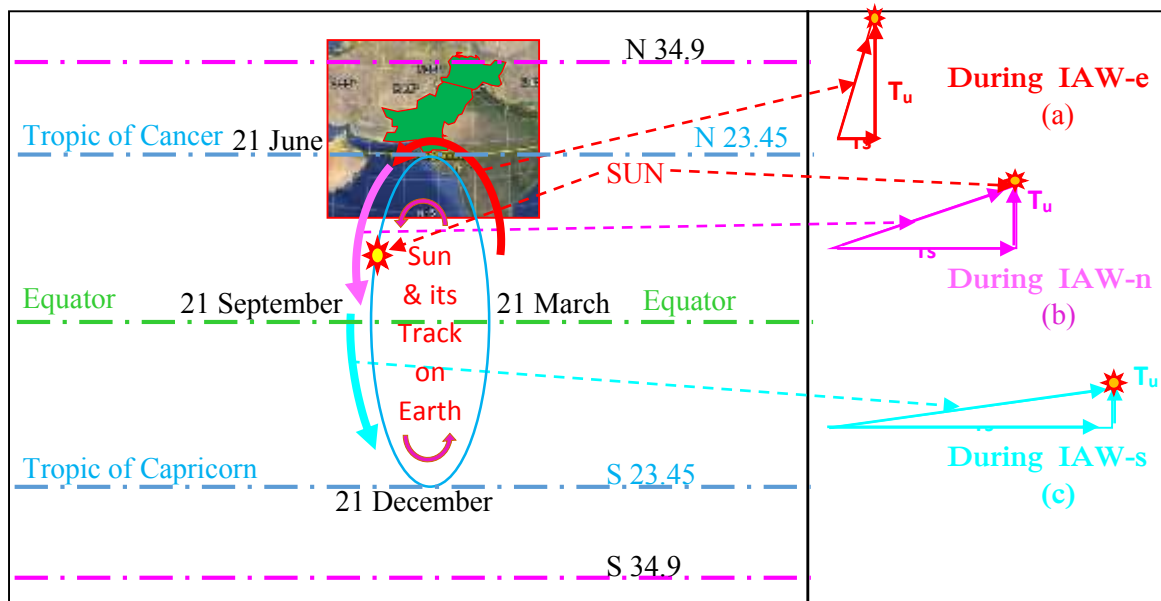


Figure 3

Figure 3 shows the annual track of Sun on Earth around Equator from latitude S-23.45 to N-23.45 and then back to S-23.45 along with the position of Pakistan and Indian Air wheels (IAW) generation site in it during summer with critical dates of sun location. The sun route during 3 groups of IAW indicated in Figure 1 are highlighted with corresponding colored arrows and approximate lateral and vertical (and westward proportional to vertical) components of solar traction during these groups shown as  $T_s$  (southward Traction) and  $T_u$  (upward and westward traction) respectively.

### Role of Earth Spherical Shape

Earth spherical shape with polar rotation has surface eastward linear speed varying as cosine of the latitude, that is maximum at Equator and zero at poles. As stated above the IAW lag towards west as their eastward absolute speed becomes less than that of earth surface at that latitude due to their vertical elevation. If these have push/movement towards pole, then with increasing latitude, the gap between the two decreases due to decreasing of leading earth surface speed with the latitude. Then with their further move towards pole, the above stated gap become zero as the eastwards speeds of the two become equal and IAW or air move towards pole along the longitude. With their further move towards pole, the earth speed reduces further and become less than that of air and hence, these IAW and the westerlies turn towards east. Thus, the Earth spherical shape manages their tracks into U-turn at their end if these have north or southward component of motion.

### Role of Moon and Monsoons

The monsoons exert westward push to the IAW and varies with their intensities within their fields of actions, that is mainly limited to western boundary of Pakistan. Promoted by the polar movement of earth towards east, the moon has traction on atmosphere and IAW varying with its location with respect Sun and the Venus etc. It has three main gravitational activities acting across the Globe and not limited like monsoons in time and space. In first case, coupled with the Sun, it has monthly 4 weeks' atmosphere and IAW gravitation traction cycle acting throughout their journey on the eastward rotating Earth varying in each quarter due to Moon's location with respect to Sun. Its traction is maximum in first week of moon as the celestial

bodies gravitational tractions are in phase on the IAW throughout their journey on the earth and minimum at the end of 2<sup>nd</sup> week or on the full moon. The 2<sup>nd</sup> is annually varying traction due to its shift of 11 days earlier with respect to solar location and thus this has approximately 3 year cycle. Its 3<sup>rd</sup> activity is traction cycle of 37 years comprised of its two nodal precessions cycles of 18.6 years, once oriented more to the Northern Hemisphere and next one more to the Southern. The peak activity period of the first is 5-6 years with extremely heavy rains with furriest and strongest traction of IAW. The period of peak activity of the 2<sup>nd</sup> is 3-4 year with heavy rains and strong traction of IAW. The remaining period of 12-13 years in first cycle of 18.6 years is of moderate rains and IAW traction and that of 2<sup>nd</sup> is 14-15 years with minimum rains or draughts and least traction. This has severe and critical consequences on global climate as discussed below.

### **Lunar 37 Years Cycle Activity Opposite Across the Globe**

As pointed out above, the 37 years lunar climate cycle (Nazeer, 2020c) has two peaks of lunar gravitational pull. On one Earth Hemisphere is 5-6 years and on the other is 3-4 years. The first one has a gap of 12-13 years with moderate rains and gravitational pull before the approach of 3-4 years peak of lunar next 18.6 years cycle. The other side of Globe has a gap of 14-15 years with least or minimum rains and gravitational pull before the arrival of 5-6 years peak of the next lunar cycle. In the peak period lunar gravitational traction of monsoons and IAW is enhanced, thus more and sever rains and IAW intensive activities. Surely 5-6 years peak leads the 3-4 years in intensity and the slack period 12-13 years leads the 14-15 years. The present (2022 year) scariest flash floods in most of Southern Hemisphere, particularly in Indonesia, Australia, South Africa, Southern America as a result of 5-6 years heaviest rains in 37 years lunar based cycle and are mutually opposite across the Earth two Hemispheres, Southern and Northern. Thus, Northern one is facing 3-4 years heavy rains cluster and Southern 5-6 years heaviest rains cluster and this will reverse after 14-15 years least rains cluster on Northern and 12 -13 years moderate rains cluster on Southern Hemisphere. It may be noted that scariest flash floods in Southern Hemisphere would have been much more sever if there were no Freon feed to GAC/IAW-s by the rains and floods water retained entrapped in Southern Pakistan.

### **Role of South Indian Elevation Profile and its Coastal Winds**

The Southern India has three divinely fabricated facilitators of the global climate control. The mutual orientation of the two Eastern and Western coast and hence of the two coastal winds and then the elevation profile and the third is mountains patterns, all guiding the two coastal winds of eastern and western coasts to assist, boost and guide the pre and early monsoons to the precipitation trap (Nazeer, 2020a; Nazeer, 2019b; Nazeer, 2020c). Thus, it helps in provision of water and its flow regulations before the IAW activations. The eastern coastal wind is its booster and western is direction director of pre and early monsoons, and both these themselves are guided and directed for this by the mutual orientations of the two eastern and western coasts of South India with its land surface elevation profile and the orientations of mountains ridges. Thus, these boost the pre and early monsoons rains and support the needed controlled irrigation water supply and favors the global heat dissipation and favorable global weather promotion.

### **Role of 4 Air Whirling Spirals Cycles of Pakistan**

The divinely created 4 Pakistani air whirling spirals cycles (Nazeer, 2019b) boost the water evaporation and precipitation cycle of Pakistan (Figure 4) and is an important contributor in annual role of Pakistan in diminishing GHC, GHT and GCC by boosting the local rainfall and water flow through recycling 3-4 times in a year the irrigation flow. With optimum water

storage, irrigation and drainage systems development and bringing maximum possible area under irrigation for maximum extension of water surface area to facilitate maximum evaporation, these whirling cycles will boost the 143 MAF flow resources to 250 MAF and present total 160 MAF circulation to 390-450 MAF (Nazeer, 2020a). The resulting northern 3 spirals carry on boosting the local water evaporation and precipitation cycle activity throughout the year underneath the global wind's activities, while the activity of 4<sup>th</sup> is mainly from November to May before the monsoons. These have rather positive role in global heat dissipation through local parts of GAC and thus boosting the local flow and downpours in quantity and also its time span in a year.

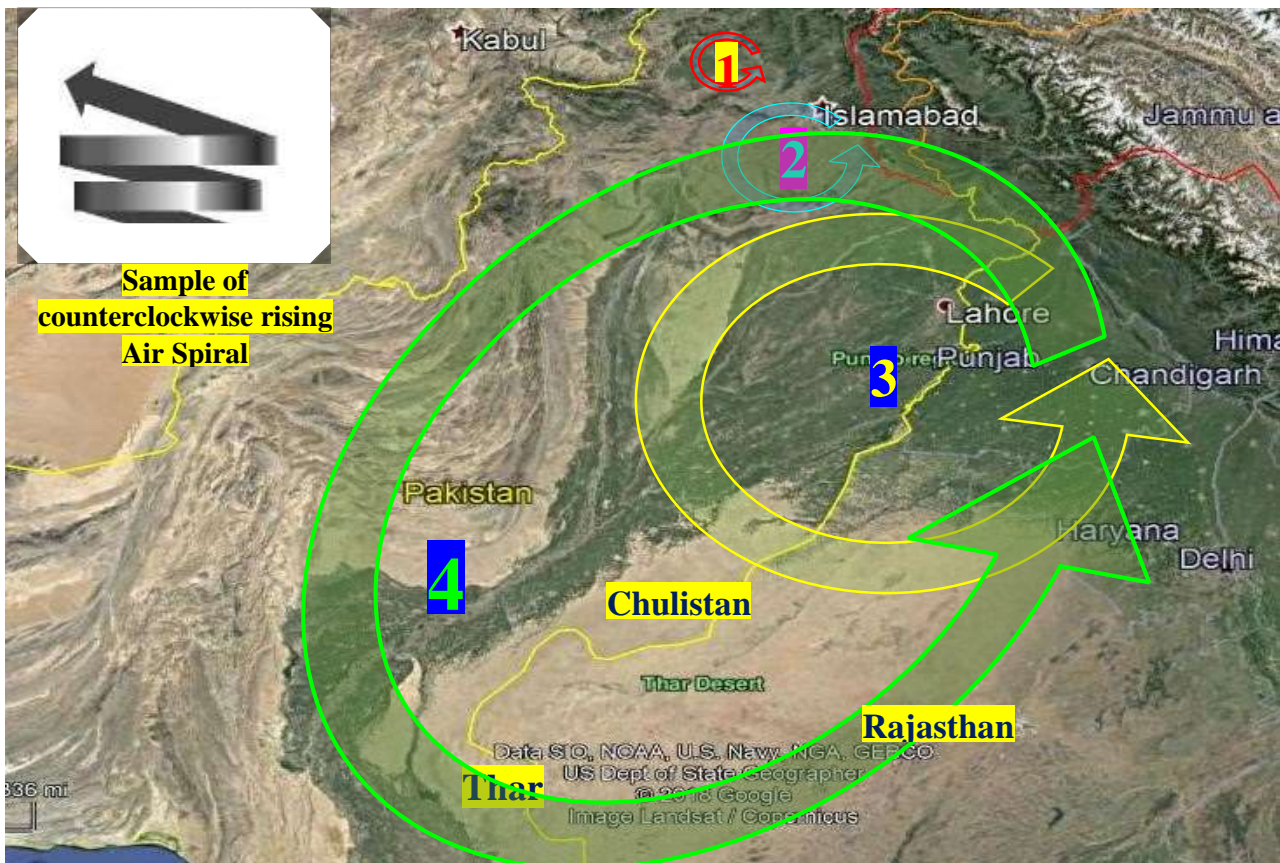


Figure 4

This figure shows four horizontal counterclockwise circulating and rising wind spiral (sample shown at top left) wheels of Pakistan operated naturally to facilitate evaporation of water. Three of these operate in Northern Pakistan including Indian Old Punjab too and 4<sup>th</sup> overall, the main plane areas of Pakistan inclusive that of first three and western states of India as shown in above figure. These are all horizontal anticlockwise rotating spiral wheels, rising vertically like a spiral. The 4<sup>th</sup> cycle is slow over and above the other three at higher altitude in late summer and winter.

### Role of Global Winds

In the early month of the year (late winter) atmospheric air in Pakistan and western India is pushed towards north-east, then north and finally directed towards north-west as guided by northern mountains ranges during February to the April by the push of winter cross continental winds from north-west, west and south-west with roots in the Southern Hemisphere tropical zone, mainly the Australian and African deserts (Nazeer, 2020a). These are generally at low temperature and moderate speed and accelerate the above stated local 4 wind spirals whirling cycles (Figure 4) resulting into boosting of local water evaporation and precipitation cycle (Nazeer, 2019b).



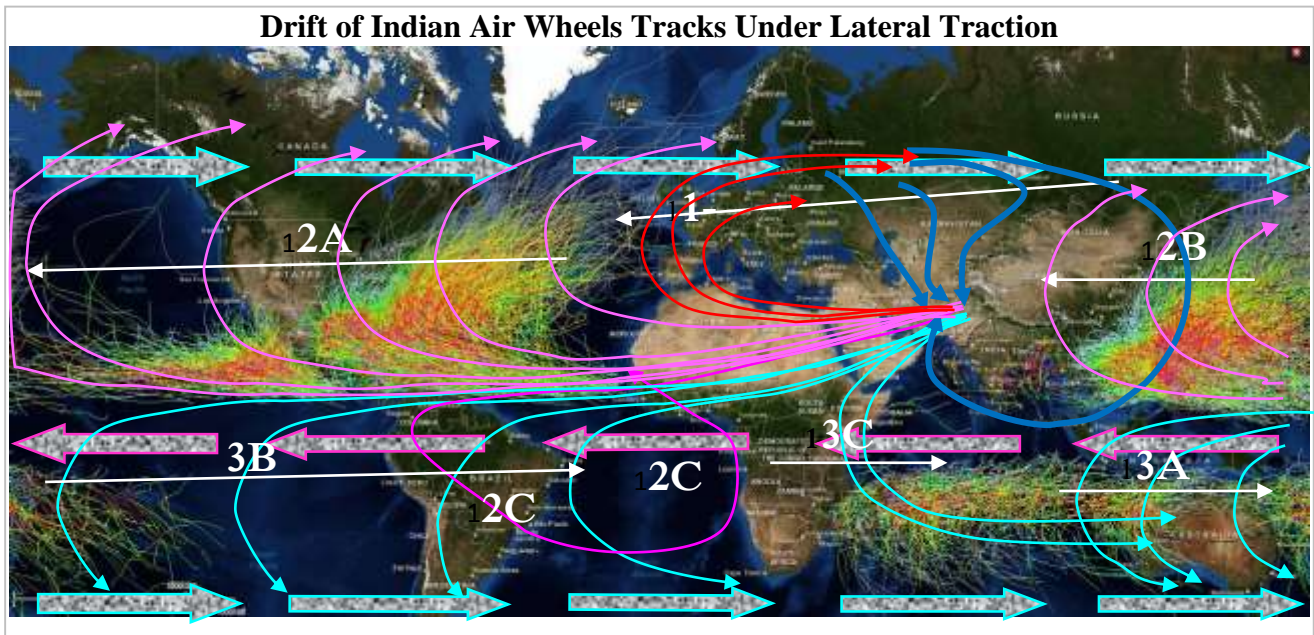
### Indian Air Wheel Trains Drivers

As stated above that GAC main, basic, vital and unique components are IAW of only the Indo-Pak origin as evaporator and condenser and water irrigating only the Pakistan as its Freon. With ample Freon, GAC system is globally most beneficial and absolutely vital and, without this it is extremely disastrous. While scenario for ample quantity of the said Freon is divinely setup for human intelligent control, maneuver and management, the IAW navigation has no human role or control. These are rather divinely controlled through number of drivers and navigators. The IAW lag westward due to Earth eastward rotation and are navigated by the resultant vector of solar, lunar and Venus gravitational tractions changing due to changing of their mutual locations in their annual and monthly cycles. Also, these are steered by the varying two opposite coastal winds from March to January, one after the other with a summer gap between the two. These IAW are also pushed by monsoons in a westward direction and steered by lunar nodal precession, earth annual and daily rotations and hence by the centrifugal force with its vertical and horizontal components resulting into drift towards equator along with its westward movement and shifting of their tracks. The spherical shape of rotating and translating Earth also plays its role in track curving and formation of their orientations as pointed out above. These all are steering and navigating these IAW on various tracks all over the world. Along with these, there are other number of pitched and plugged promoters over the Earth Globe making this an absolutely unique Global Climate Vital Actuator serving whole of the Earth Globe like a unique vital heart organ in a human body. In this system water irrigating Pakistan is like blood in body or Freon in an air conditioner or Fuel in an automobile, rather more than that as without fuel automobile and without Freon A/C will not work, but without the said water this system becomes most terrible dragon hurling too many extremely horrible calamities onto whole of the Earth Globe. The irrigation water absorbs latent heat of evaporation from the Earth atmosphere and discharges it to Troposphere at its precipitation like Persian Wheel rotary water pump. The said IAW with this Freon carries on the process of evaporation and condensation thousands of times on whole the track mainly from Pakistan to Atlantic with the same water evaporating at the bottom and condensing into water at the top of air wheel continuously on its track absorbing heat from the earth environments and discharging it to Troposphere. Hence, without proper optimum functionality of GAC with optimum Freon, there is no way of life existence on the Earth Globe. In brief the navigation and steering of vertical air wheels (IAW) are carried out over the Earth Globe mainly by

- a. Earth eastward rotation about its polar axis resulting into westward lagging and rolling of IAW.
- b. Centrifugal force due to the Earth and its atmosphere rotation about its polar axis resulting into vertical and southward components of this force and hence the resulting movements.
- c. Coastal winds push varying as sine wave within their time and space jurisdiction as
  1. sea to land  $150^\circ$  opposite towards its north from June to July
  2. followed by a summer gap between the reversal of two opposite coastal winds
  3. and then increasing land to sea wind  $30^\circ$  in phase pushing it mainly towards west with a sizable southward push too from September to January
- d. Westward push by the monsoons blasts within Pakistan
- e. Varying solar traction; vertical, south and westward due to solar instant location with respect to IAW locations throughout their journey all over the world.
- f. The 4 Earth peak radial activity locations on its track around the Sun (Nazeer, 2020c) boosting their translation speed.
- g. Varying lunar traction in 37 years cycle by its two 18.6 years nodal precession cycles as discussed above with approximate peaks periods in years 2010-15, 2022-25, 2047-52, 2069-72.

- h. Solar and lunar monthly varying coupled drag.
- i. Lunar and solar annually coupled drag variation due to 11 days lunar annual lead.
- j. Venus lapses traction cycles of 8 years period and two transits, 8 years apart in a cycle of 243 years. Next critical transits are in June of years 2247 and 2255 on the Northern Hemisphere and in December 2109 and 2117 on the Southern. These have continuous enhanced drag during about 4-5 years.
- k. Earth spherical shape with polar rotation managing the tracks of IAW into U-turn at their end.
- l. Too many other actuators like mountains ridges, land elevation profiles, global wind patterns etc.

The Venus lapses maneuvered traction variation is small with small change in a year and Transit traction cycle is of 243 years and its Transit in years 2247 and 2255 on the Northern Hemisphere during the June and on the Southern in December 2109 and 2117 are critical. The years 2109 and 2247 are extremely critical if GHC and GHT scenario is not controlled. Lunar drag variation due to its 11 days annual lead is between the years and not within a year. In its 3-4 years cycles, it mismatches once with initiation of sea to land breeze at the end of May and hence results in heatwave in CRT deserts and off routine generated IAW find gap in coastal wind barrier and moves to Atlantic and then hits USA as a Hurricane in early June. Lunar, monthly variation in its drag changes the speed of IAW throughout their journey within a month. The lunar traction based on 37 years cycle has little variation within a year, but much critical in the critical clusters of 5-6 and 3-4 years; however, it enforces needs of the large water storage and management system during 22 years in Pakistan to avoid extreme floods losses and regulated irrigation water supply in 14-15 years droughts cluster for the smooth operation of GAC, the vital rather emergency global need. The 3 out of the 4 Earth peak radial activity locations on its track around the Sun are in the IAW active zone and show their boosting the drag activities for few days (Nazeer, 2022a). These three are the drag boosters, one each in each of the three groups shown in Figures 1 and 5. Earth polar rotation with Sun heat radiations generate westward rolling IAW and monsoons push increases their westward translating motion of the IAW and particularly results in boosting the NAH intensities and frequencies. The resultant of southward components of coastal wind, centrifugal force and the sun traction results in drags of the track of IAW towards south. This Indo-Pak based Global Complex Climate Steering and Navigating System with optimum irrigation supply in Pakistan moderates the temperatures, winds flows, rains and hence boosts the pleasantness in climate throughout the Globe. In the absence of said irrigation supply it starts firing its climate bombs and missiles in form of heat generated vertical Indian air wheels (IAW) around the Earth Globe moving its launcher barrel  $45^{\circ}$ , but it covers the targets almost 360 degrees from North-East to west, then South and then South-East starting in March till December as shown in Figure 5. This results in extreme temperatures, devastating heatwaves, huge and vast wildfires, critical storms, hurricanes, tornados, cloudburst, heavy rains, disastrous flash floods, extremely troublesome snowstorms, Glaciers and mountains avalanches, volcanic eruptions, earthquakes, tsunamis, epidemics and too many other calamities with highly extreme threat. The said active period is physically divided into three main groups as is evident from Figure 1 and these are discussed below.



**Figure 5**

On the world map yellow, red and green multicolor lines show the tracks of hurricanes and storms (Figure 5). Wide arrows with pink boundaries show easterlies and that with cyan boundaries show the westerlies, both Northern and Southern. The other lines are tracks of IAW. From April to June the tracks of IAW are shown by red and blue arrows beneath the white arrow No. 1 and it belongs to group stated as Eurasian Train Group named as IAW-e in Figure 1. These tracks have mostly of closed loop starting and ending at Pakistan. The pink arrows under white arrow No. 2A show the tracks of NAH and Northeast Pacific Hurricanes including Pineapple Express or atmospheric river attack on Northern America with some fallout on Europe and northern Asia, while those beneath No. 2B showing the tracks of storms, tornados and twisters hitting Fareast, China and Japan, all these are components of group shown pink in Figure 1, named as IAW-n in Figure 1. Its southern fallout shown beneath 2C arrows accompanies with 2A and 2B. Their sequence with time is 1, 2A and 2B. The sequence of Southern Hemispheres group named as IAW-s is 3A, 3B and then 3C.

### Tracks Groups of Indian Air Wheels Trains

Almost after the March, the temperature in Indian Subcontinent rises due to sun radiations over and above the GHT scenario. Its approximate variations trend in summer is shown by the red line in Figure 1. As shown in this and figure 5, the IAW traversed tracks over the Earth Globe are divided into 3 groups by its Navigators as

- (a) Eurasian Group (red),
- (b) Rest of Earth Northern Hemisphere group (pink),
- (c) Earth Southern Hemisphere group (cyan).

These are discussed below in the light of only traction by the solar gravity, earth centrifugal force, coastal winds and monsoon push leaving complex variations of lunar and Venus tractions.

- i. **Eurasian Group:** The temperature in this IAW-e group is much severe in April to June as shown by red line in Figure 1. IAW feeding the NAH during this period is, however, too small as the solar traction towards south is yet too small and the sea to land wind 150<sup>0</sup> opposite towards its north, pushes it towards north and opposes the said air wheels drifting much towards south under solar and southward traction by the horizontal components of Earth centrifugal force. Mostly, these trains of IAW-e roll westward along the latitudes with minutely increasing southwards traction by the sun (part 'a' of Figure 3) balanced at the start by the push of sea to land breeze. Hence, these air wheels with tracks shown red in Figure 5 and Figure 6 too roll westward with shifting the tracks

slowly from north to south and then from east to west as shown in Figure 5 under increasing the west and southward traction of the Sun (part 'a' of Figure 3) with time. As moving towards west these air wheels have Northwards push on Sahara due to high air pressure and temperature as compared to that of Mediterranean and also by the northward flowing African west coastal wind crossing over the Sahara, thus turning these towards north. As earth eastwards speed decreases towards poles, these IAW-e after crossing the 45-N latitude start turning towards east due to the reducing reference Earth absolute speed towards poles as compared to absolute eastward speed of IAW. The increased drift towards west and south of their later part results into their more drift towards west as indicated by red arrows beneath the white arrow No. 1 in Figure 5 showing their progression toward west and then north and then east as shown by red tracks on Middle East, Sahara, Europe and Russia (Figure 5). Their further movement is discussed in later sections under headings of Eurasian Climate Trains tracks.

- ii. **Rest of Earth Northern Hemisphere Group:** From July onward to about November northern push by sea to land wind decreases and ultimately turns into increasing land to sea wind at 30° in phase towards south with increasing sun traction towards south along with decreasing southward component of Centrifugal force, which is decreasing with the decreasing latitude. As can be seen in Figure 1, this group has the history of off and on slipping of some of the air wheels in both the preceding and following groups. These groups too, have some slipping air wheels within this group particularly in overlapping zones. Thus, IAW-n roll and slip westward along with drifting towards south as discussed below.

#### Westward Rolling and Slipping of IAW-n

The westward rolling of IAW-n of 10 km diameter is as discussed above due to Sun radiations and Earth rotation along with traction of the Sun and the Moon. It carries on lagging behind the earth and this completes the air wheel with rolling about 31.42 km on earth. The slipping of IAW is

- a. due to the push by monsoons and westward component of costal winds both limited within territories of their action and thereafter by the Easterlies. The targets and attacking routes of this group are elaborated in (Nazeer, 2022a) while detailed mechanism is discussed in (Nazeer, 2020a; Nazeer, 2019a; Nazeer, 2019b; Nazeer, 2019c; Nazeer, 2020b; Nazeer, 2019d; Nazeer, 2020c; Nazeer, 2020d).
- b. Southward Drifting of IAW-n and their Tracks: IAW-n experience
  1. continuous southward push by continuously southward increasing solar pull (part 'b' of Figure 3)
  2. horizontal component of centrifugal force due to earth polar rotation decreasing with decreasing latitude and also while going away from 45° latitudes and vice versa.
  3. the southward push by land to sea breeze increases with time along with strong westward push too.

The last two act within their limited jurisdiction as per location of IAW-n, while action of first one is continuous throughout and increasing with time. Hence, first one along with collaboration of the last two, carries on pulling IAW-n towards south during their whole journey along with pushing the onward coming IAW-n to the new track due to increasing its traction with time. Thus, their track is constantly dragged towards south with time (Figure 5).

- c. At the African western coast these IAW-n experience a strong northward push by African western coastal northward winds caused by Easterlies and IAW-n steered by South American northern and northwestern mountains ridges as shown by pink

arrow in Southern Earth Hemisphere marked as 2C in Figure 5. These mainly result in toppling of vertically rolling IAW-n into horizontally rolling and drifting NAH and storms hitting USA & Caribbean countries. However, targets are decided by the resultant of these two wrestlers 2A and 2C.

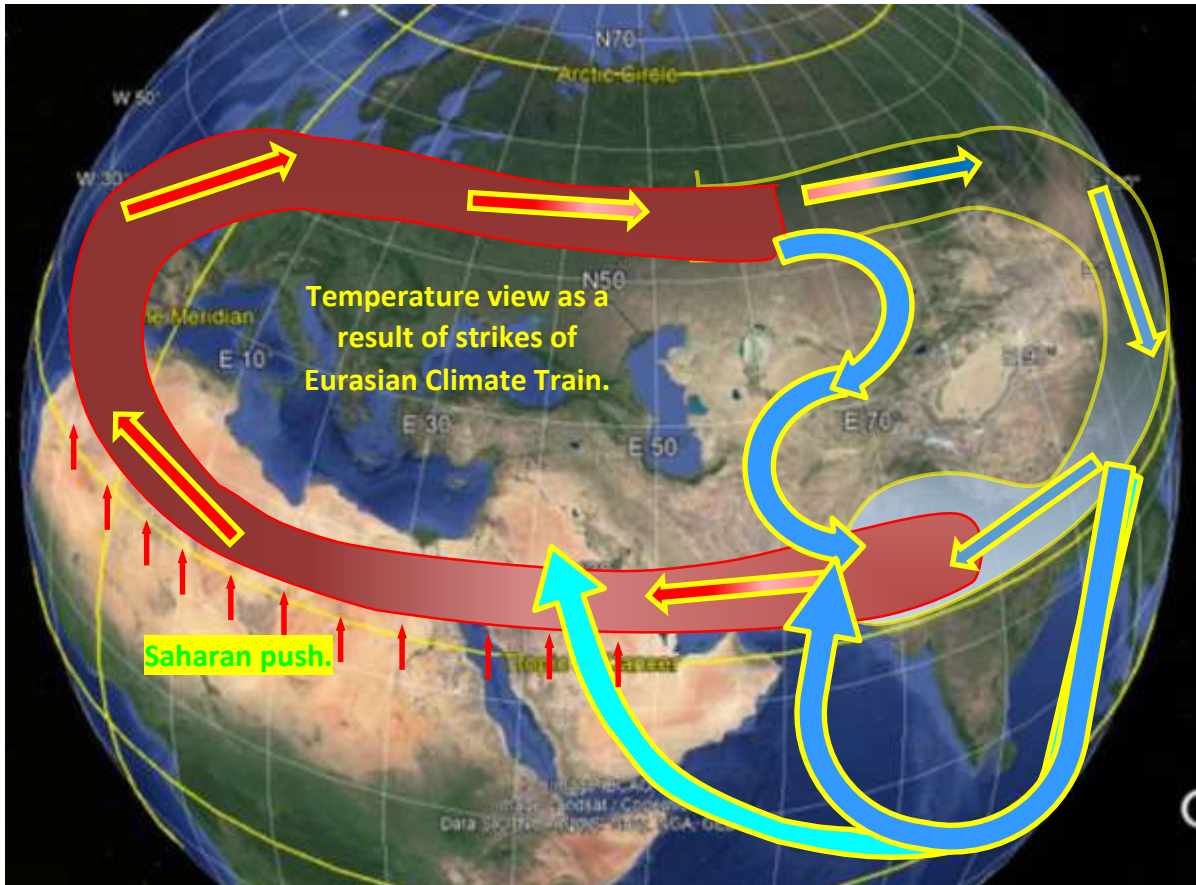


Figure 6

The Eurasian Climate Train of rolling and carousing air wheels starts from Pakistan and goes to Europe through Middle East and Northern Sahara Desert of Africa (Figure 6). From Europe it goes to Russia and China, then to Fareast from over the Pacific Ocean and then to India and Pakistan. In its part from Pakistan to Russia, it is movement of heated air (red) resulting into heatwaves and wildfires. Thereafter, it absorbs water on the way and in its later part (blue) it discharges the heat to Troposphere and rains and snow to the earth ultimately in Pakistan. The later part has some offshoots shown dark blue. A few are diversion from eastern Russia and China to Pakistan through Afghanistan and the others from the Indian Ocean to Pakistan. Since the start of IBWT it is depleting water from right of way, blocking the major global heat dissipation and adds to growth of GHT and current heat input by Sun radiation and that resulting from the wildfires including all other heat sources. Water scarcity is growing on tracks and its severity moving from Eastern Europe to Russia and China. The complete availability of irrigation water in Pakistan will block the new heat input and the GHT growth and drain out the already heaped 940 ZJ and put these in reverse gear in 10-15 years.

The resultant and mainly the NAH and IAW-n tracks continuously carries on drifting southward with their further tracks normally towards west along with crossover to Pacific of the IAW-n escaping from tumbling and toppling by the African coastal winds 2C and these attack USA & Canada as storms and Pineapple Express from the west and then next IAW-n attack Fareast, China and Japan as storms and tornados and the next on Indian Subcontinent too as the later part of monsoon as discussed in references (Nazeer, 2020a; Nazeer, 2019a; Nazeer, 2019b; Nazeer, 2019c; Nazeer, 2020b; Nazeer, 2019d; Nazeer, 2020c; Nazeer, 2020d; Nazeer, 2022a; Nazeer, 2022b). The eastward moving end

part of these IAW-n follow each other in tandem train in their preceding sequence and rarely happens to join hands and boost each other. Thereafter, IAW-s come in the field as discussed below.

- iii. **IAW-s Southern Hemisphere Group:** The Sun southward traction carry on increasing and from about end of October this tries to pull IAW further towards south throughout their journey in form of IAW-s (part 'c' in Figure 3). The land to sea Breeze too increases with time in this time zone and it pushes IAW-s towards south within its activity zone. The horizontal component of centrifugal force decreasing to zero at the Equator and pulls them towards Equator. Thus, on north of Equator all the three actuators are in phase, while after crossing equator, the horizontal component of centrifugal force starts increasing and pulling them towards the Equator, whereas Sun southward traction carry on increasing and this tries to pull them towards south throughout their journey. Their tracks shift further towards south to such an extent that these do not turns towards north and turn to south by solar traction over Malaysia, Indonesia and then southeast after about 45-60<sup>0</sup>-South latitude due to reference Earth speed reduction towards pole. The next IAW-s turn south over Australia and then next over to New Zealand, then next over south America, the next over Africa and next again over Malaysia, Indonesia from the west, then next over to Australia from the west. Partly, the end part of most of these hits Antarctica on their southeast through the gaps in the Southern westerlies or over these, particularly those directed by the lands and their activity in Antarctica is antipromotional to the distance and promotional to their momentum and heat energy at their dispatch from the land. These IAW-s targets the Southern Hemisphere and hence, it experiences rise in temperature, heatwaves, whereas Australia and South America are as yet leading the rest in this side of Earth in heatwaves and wildfires and soon the track of these wildfire will be followed by their other comrades. The aftermath of these wildfires is stormy rains and scariest floods in the Southern Hemisphere along with increasing sublimation, cracking and dispersion of Antarctic ice in Southern Ocean, while horrible and deadliest snowstorms in all the Northern Hemisphere, particularly USA, Canada and Europe mostly triggered by Australian and Brazilian wildfires and heatwaves. The energy of eastward deflected portion of IAW-s are boosted by the approach of preceding one from their west to east reversion of tracks and thus the energy deficiency as a result of temperature decline at CRT deserts at the initiation of IAW is somewhat compensated and concentrated contrary to the eastward moving portions of IAW-n or IAW-e moving mostly in tandem trains. The targets, firing and attacking routes of IAW-n, IAW-s and their promoted aftermaths are discussed in (Nazeer, 2022a), while their track traversal sequence in time and space is given below.

### IAW Tracks Traversal Sequence in Time and Space

The main global activities of IAW in time, may it be disastrous or beneficial is in summer from April to December as shown in Figure 1. It may extend and advance into March and lag beyond the December as a result of present global heating (GHC) growth. As shown here the main thrust of NAH initiators is from 15<sup>th</sup> July to November. The NAH is about one third part of IAW main activities zone with some small activities in both preceding named as IAW-e and following parts named as IAW-s, while the following and preceding activities too have their overlaps in the NAH time zone named as IAW-n during their mutual transitions (Figure 1). The two ends zones have their distinct role in Earth Climatology like that of the NAH bound IAW-n. The space patterns and sequence of IAW tracks are mainly shown on the world map in Figure 5. Here, multicolor (yellow, red and green) lines show the tracks traversed by hurricanes and storms in the past. Wide arrows with pink boundaries show easterlies and that with cyan boundaries show the westerlies, both Northern and Southern. The other lines are

tracks of IAW. From April to July the tracks of IAW are shown by red and blue arrows beneath the white arrow No. 1 and it belongs to group stated as Eurasian Climate Trains Group named as IAW-e in Figure 1. These tracks have mostly closed loops starting and ending at Pakistan as summed up and elaborated in Figure 6 too. The time sequence is from east to west by their small drift from North to South under solar, lunar and Venus traction accompanied by that of coastal wind and centrifugal force due to earth polar rotation. The pink arrows under the yellow arrow No. 2A show the tracks of NAH and Northeast Pacific Hurricanes including Pineapple Express or atmospheric river (Nazeer, 2019e) attack on Northern America with some fallout on Europe and northern Asia, while those beneath No. 2B showing the tracks of storms, tornados and twisters hitting Fareast, China and Japan. All these are components of group shown pink and named as IAW-n in Figure 1. Its southern fallout directed by North western mountains of South America, then southern westerlies and then towards north by African western coast shown beneath 2C arrows accompanies with 2A and 2B. Their time sequence from July to end of November is from North to South through major part of their track under the increased solar, lunar and Venus traction accompanied by southward centrifugal force drift due to earth polar rotation and push of coastal wind at the start and then east to west at end by the easterlies push and the local environment to north if these are still in Northern Hemisphere and by the coastal winds if these have crossed the Equator. Their group time sequence is No. 1, then 2A and then 2B from east to west while within the group the tracks sequence is mostly east to west and rare departure from this is when some heavy air gust causes early northward drift. The sequence of Southern Hemispheres group named as IAW-s from the end of November to early January is 3A, 3B and then 3C from North to South through major part of their track under lunar, Venus and the much more increased solar southward traction accompanied by southward centrifugal force drift due to Earth polar rotation and push of furious cross coastal wind at the start. The increasing southward push starts forcing these to cross the Equator and as the southward push increases further, it starts to carry on their early southward drift and hence these start retracting from west to east contrary and opposite to that of IAW-n. The easterlies push in Southern Hemisphere supports their southward drift along with the local environment, earth reduced speed and the westerlies towards east. The flow of air at the tropical regions is west oriented towards the equator. Its westward flow is due to earth eastward polar rotation and towards Equator due to lateral component of its centrifugal force. Movement of IAW-s and IAW-e and IAW-n away from the Equator beyond  $45^{\circ}$  latitude is oriented eastwards towards westerlies because of earth eastward speed relatively lower than that of IAW absolute speed. These IAW bring pleasant weather and moderate rains if saturated with water in Pakistan and bring various calamities if dry. It seems worth to review the above stated mechanics of these actuators/directors of IAW. In short, Pakistan is a fueling junction of almost all the Global Climatic Air Wheel Trains with all glorious cargos for all the world, if Freon availability is managed by human beings and if not, then all terrible scariest calamities is the fate of the Earth Globe. The very first of these is the Eurasian Climate Trains as shown No. 1 in Figure 5, reproduced and elaborated in Figure 6. The next is the North American NAH trains (Nazeer, 2019c; Tropical cyclones, n.d.; Kelly et al., 2019), then Fareast, China and Japan bound with tornados and storms cargos, then comes Indonesian and Australian bound with storms and scariest flash floods, heatwaves and wildfires with a shuttle of huge snowstorms dispatched to USA, Canada, Europe, Russia, China and Pakistan. Then in the queue is Southern America with heatwaves, wildfire, rains and flash floods and boosting the above stated Australian shuttle. Then in queue is the Africa with heatwaves and scariest floods with boosting Australian wildfires and USA bound atmospheric river attack. The trains bound for the three continents further dispatch the three shuttles to Antarctica for sublimation and dispersion of its ice.

### **Eurasian Climate Trains and their Closed Loop Tracks**

These Eurasian Climate Trains (ECT) of the westward rolling air wheels IAW-e generated by sun radiations at India and Pakistan start in April and carry on till July. The Global Temperature (GHT) provides highly elevated baseline for this and their westward rolling movement is the result of Earth rotation and gravitational traction of celestial bodies, like Sun, moon and Venus etc. The sun traction and the preceding winter gap in coastal wind supports its westward movement from April to the end of May. In the June Sea to land coastal wind pushes it against a bit increased solar southward traction and thus helps in its going westward on the track along the latitude. The baseline GHT and the Sun radiations heighten the local temperature and here it is not controlled and reduced due to scarcity of irrigation water as a result of WB two most terrible moves (Nazeer, 2020b) of IBWT and its misguided recommendations of 1976 in development of water and power resources of Pakistan. Thus in 2022, too many jungles caught fires in KPK, Punjab and Baluchistan provinces and even the wheat crop ready for cropping caught fires and was burnt before any effort could be made for its control. Hence, it resulted in acceleration of the IAW-e formation and its transporting speed loaded with heat from its track shown red in Figures 5 & 6. These move to west along the latitude to Sahara where these are loaded with further heat and pushed towards north on to Europe (Figures 5 & 6) as elaborated above under headings “*Tracks Groups of Indian Air Wheels Trains*”. Here in Europe again these result in more intensive heatwaves and wildfires with glimpses of results shown in Figures 7, 8 and 9 due to scarcity of ample cooling water and hence is loaded with heat further. Then these move to western Russia and result here too in heatwaves and wildfire shown red in (Figures 5 & 6). Then loaded with further heat move to Eastern Russia, China, Mongolia, Korea and the Pacific where water is absorbed to cool down their temperature and hence here is not too many heatwaves and no wildfire as yet shown by blue track in (Figures 5 & 6). The area other than the Ocean is being dried to facilitate the terrible wraths of water scarcity, droughts, heatwaves and wildfires within a few years if irrigation water scarcity in Pakistan carries on triggering these IAW-e. From the Pacific Ocean water is absorbed to its maximum extent depending on their thirst and heat contents and are directed to Pakistan through various tracks shown blue in Figures 5 & 6 as per their heat and water vapors contents status. The present unimaginable flood disaster in Pakistan is thus promoted by the preceding extreme heatwave and huge wildfire in Europe and Russia, which in turn were initiated by the preceding extreme heatwave and wildfires in Pakistan by the GHT following the tracks lines shown red (symbol for heat) and the 2<sup>nd</sup> half of their closed loops tracks over Eastern Russia, China, Korea and Pacific is shown blue (symbol for water vapors) in Figures 6 and 5. Some of ECT also rush to Pakistan through short tracks routes from Russia through China and Afghanistan and some through long routes from Pacific and Fareast to Indian Ocean and then over the Arabian Sea to Pakistan and India.



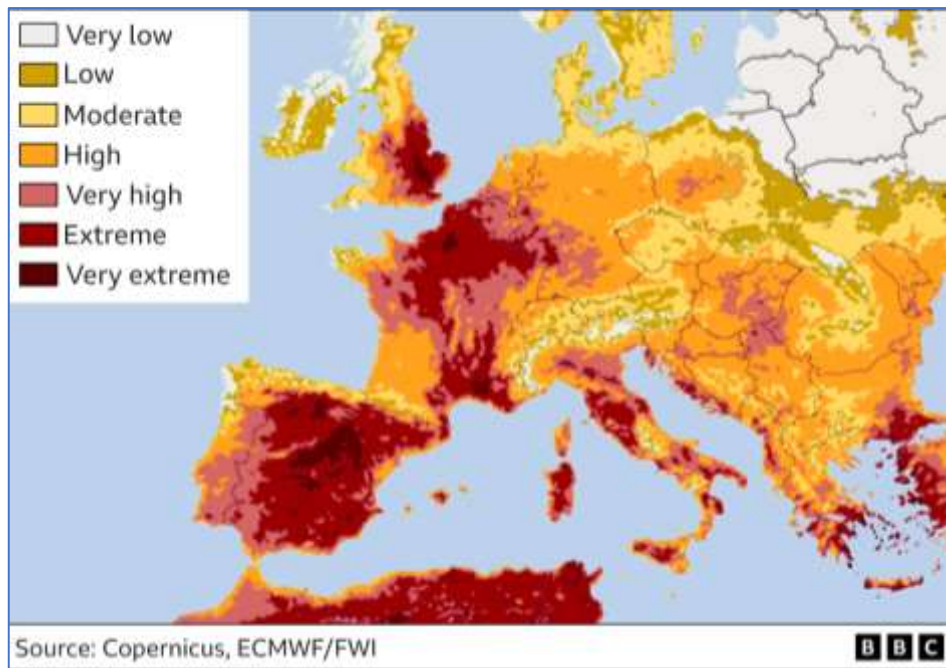


Figure 7. Fire danger forecast for Europe on 19<sup>th</sup> July 2022

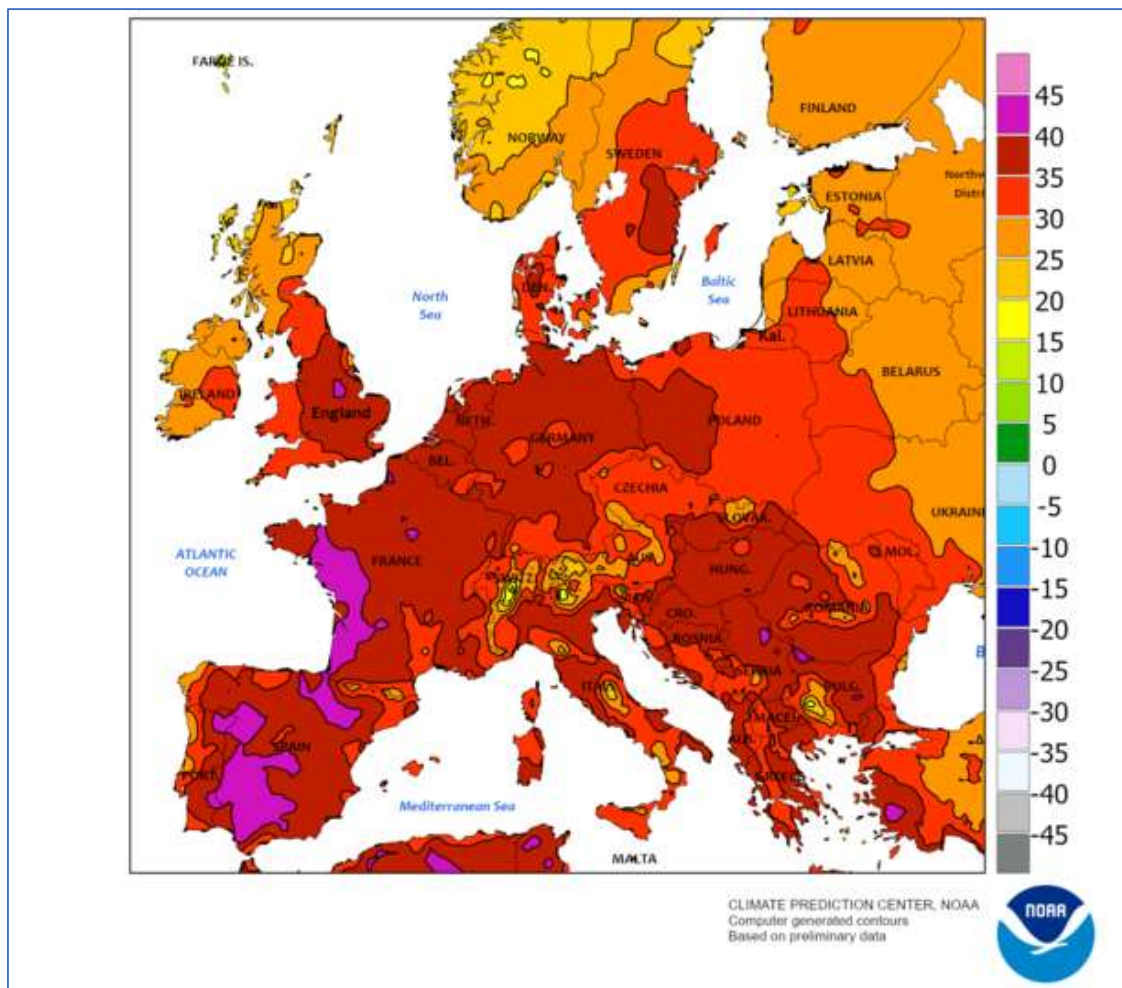
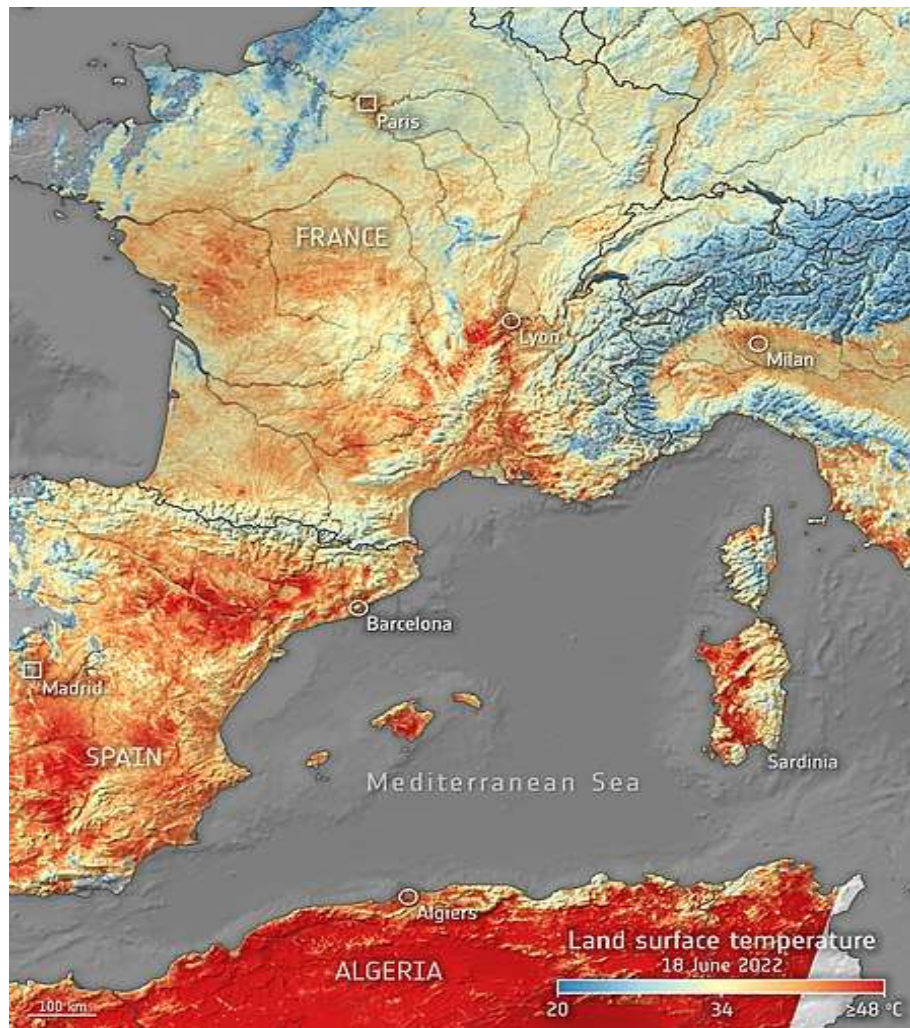


Figure 8. Extreme Temperature in Europe 17-23 July 2022, after the strikes of Eurasian Climate Train



**Figure 9.** Land surface temperature in Europe and Sahara on 18<sup>th</sup> June 2022

At present some strokes of its offshoots on Arabian Peninsula have also been observed as shown with cyan off shoot (Figure 6). With the present growth rate of GHC and GHT, the Middle East also seems to be its next targets of double attacks within few years, heatwaves in April to August and stormy rains and flash floods from September to December. The decisive role in disasters of these trains is that of water irrigating Pakistan, mainly the Northern. Thus, while Europe has already approached these extreme calamities with glimpses shown in Figures 7, 8 and 9 and rushing towards further scariest disaster in near future, the Eastern Russia and Central Asians States, China and Korea etc. are on the way to extreme water scarcity, droughts, heatwaves and then terrible wildfires too if Pakistan is not optimally irrigated continuously with development of dams for water storage and irrigation systems for regulating the continuous irrigation supply of available water in view of both the seasonal and above referred lunar based 37 years cyclic fluctuations (Nazeer, 2020c). The calamities as a result of WB blunders were further boosted by matching critical era of lunar 37 years cycle as discussed above. If the irrigating water is available as per needs, there would not be too high temperature and no wildfire instances and thus loaded with the water vapors, these ECT of IAW-e will deliver moderate rains in Middle East, Europe and Russia in place of heatwaves and wildfires and will transport large quantity of global heat from their track to Troposphere. Also, at their approach to Pacific with moderate heat content, it will absorb moderate water from Pacific and return to Pakistan with moderate rain fall, much pleasant and joyous weather in place of present scariest rains and catastrophic floods.

### **Terrible Part of Lunar 37 Years Cycle in Action**

The year 2010 was from the heaviest monsoon raining 5-6 years cluster in Earth Northern Hemisphere and 2022 after 12 years is of 3-4 years large raining cluster with intensity lower than that of 2010 in the 37 years lunar promoted rains cycle. But the GHT growth during these 12 years period and that added by the resulting flashed wildfires has pushed it much up than the previous heaviest rain cluster of year 2010. Thus, ECT has gained too much boost from this joint venture and travelled starting from Pakistan to Sahara, Europe and western Russia with increasing heatwaves and wildfires on all the way and then sucking water from Eastern Russia, central Asian States, China, Korea, Japan and Pacific Ocean and then in its 2<sup>nd</sup> round to India and Pakistan with heavy rains and perishing floods attacks at the end of its closed loop tracks. On the other side of Earth, 5-6 years cluster of heaviest rains is in actions with next terrible 3-4 years yet in queue after 14-15 years. It has shown terrible as well as horrible aftermaths in 2022-2023 as heatwaves, wildfires and scariest flash floods. An immediate emergency moves to reduce the overall global disaster in both the hemispheres, particularly the Southern, European and Russian is in the maximum possible supply of water to Pakistan from Chenab, Ravi and Sutlej rivers, right from March to July and August.

### **Global Climate Relief from 2022 Pakistani Floods**

A large quantity of flood water has been absorbed in the Earth and also large quantity has been entrapped in the flooded area of Pakistan and it is the feeder of the Freon (the water vapors) of the GAC and it will be its Freon for rest of this year and a next year or two also, subject to the availability of ample local evaporation heat. This will enable the GAC to function somewhat fully and it will provide a big relief in almost all global calamities like heatwaves, wildfires, hurricanes, storms, snowstorms, heavy rains, cloudburst, floods, avalanches, land and mountains slides, tsunamis, earthquakes, epidemics, health hazards etc. linked with IAW and GHT right from September 2022 to 2024, mainly in 2023. However, northern and central parts of Pakistan is not flooded and hence ECT will be somewhat loaded here and will have some low-grade show in Europe, Russia and China. Also, the years 2023 and 2024 are from the 3-4 years group of lunar heavy monsoons and hence heavy and furious push to IAW and NAH etc. hence their possible results will be diminished much by the Pakistani floods through IAW and GAC. The year 2023 is also from 3-4 years cluster and a most terrible game was to repeat again, but heavy rains water spread over and retained entrapped in southern Pakistan will be the Freon of the 2 parts (GAC-1 and GAC-3) of above stated GAC and it will pump out almost 30 ZJ heat, hence, the extremely terrible situation that would have been in its absence will not repeat in this year. There would rather be a relative relieve for the time being in IAW-n and a bit also in IAW-s. The GHT growth and rate of polar and glaciers ice sublimation will also be reduced in remaining part of year 2022 and in 2023. This is a new divine guidance for all the stakeholders and international community to rethink and revert their efforts to the development of optimum irrigation system in Pakistan. IAW-e/ECT will, however, not benefit too much from this relief as the central part of Pakistan has no floods water entrapped here to control the temperature rise and control much the Eurasian Climate Trains activities.

### **Wildfire Control and its Energy Preemptive Usage Strategy**

The GHT has grown much up and the gap between GHT and flashpoint temperature of the grass and dry tree leaves and branches in forests has become too small. The Sun radiations reduces this gap to zero and hence wildfire breaks up. If irrigation water is there then its evaporation will absorb heat and transport to Troposphere and thus avoid wildfire break up. Due to scarcity of ample irrigation water supply, the temperature approaches the flashpoint of dry grass and other various flammable material and this results in widespread wildfires as this completes the fire troika; (1) fuel (grass, trees and plants), (2) oxygen from atmosphere and (3)

flashpoint temperature and heat. The Irrigating water absorbs latent heat of Evaporation from the environment and thus controls the temperature growth below the flash point and thus avoids wildfire and this easy window is open for the human being to control the situation. The 2<sup>nd</sup> possible human action is the removal of fuel from the scene of above stated troika of the wildfire. This fuel (grass, tree leaves and branches, even the plants etc.) must be removed from the scene beforehand in winter such a way that it does not support the spreading of fires. This source of energy in place of resulting into huge disaster and number of problems must be steered to function in benefits for human beings. This fuel material must be used to meet the energy requirements through power plants and used in domestic heating needs. The trees should be cut and removed from alternate squares/rectangles of the size in which direct fire may not jump and could be easily contained. The emptied squares may grow the plants in sequence such that power plants may have continuous uninterrupted fuel supply. The countries with threats of wildfires should formulate comprehensive fire safety plans to avoid wildfires and control its progression both in time and space if all the way it breaks with collaboration of UNO.

### Findings and Results

The findings in brief are:

- i. The Indian Air Wheels (IAW) are as evaporator and condenser of divinely created unique Global Air Conditioner (GAC) and only the water irrigating Pakistan is its Freon.
- ii. IAWs are promoter of the climate over all the Earth Globe, pleasant and favorable if the said optimum Freon of GAC is arranged by the human being and if not then it is supplier of all the terrible monster calamities over all the Earth Globe.
- iii. In other worlds all the global calamities has the root in blockage of Freon (optimum water supply irrigating Pakistan) of GAC and these can be reversed and turned into beneficial and fruitful opportunities by human being through optimal provision of this Freon.
- iv. The WB blunder of IBWT has blocked the 14.245 ZJ global heat transport per year to Troposphere by diversion of Freon of GAC-1, the 39 MAF water of Eastern 3 Pakistani rivers to India. Thus, extra ordinary heat (16.48 ZJ/year since 1973 in place of 2.245 ZJ/year before 1960) is being continuously added to the Earth Globe.
- v. WB subsequent misguidance in its 1967 recommendations for development of water and power resources of Pakistan blocked annual possible dissipation of 9.893 ZJ of GAC-2 and 15.78 ZJ of GAC-3 from GHC to Troposphere.
- vi. The Nature had itself set in operation GAC-1 for human being needs when it (mankind) was ignorant of its needs and procedure to fulfil it and made GAC-2 and GAC-3 well established for human beings' operation for its enhanced needs when it started to realize the emergency of this need. The human being is rather pushed to realize this through the World Bank above stated blunders.
- vii. With the reversion of IBWT (restoring operation of GAC-1), the new addition of heat to Earth Globe will only reduce to 2.235 ZJ/year and will not stop it completely and will not drain the already heaped 940 ZJ in the Earth Globe.
- viii. With operation of GAC-2 along with GAC-1, the addition of additional heat will stop and drainage of 940 ZJ will need 123 years and hence complete by 2153.
- ix. The full operation of GAC, all the three parts (with drainage potential of 39.918 ZJ/year) as soon as possible with development of all infrastructure immediately, at the most by 2040, all the 940 ZJ will be drained by 2078 with huge local clean energy and agricultural, aquaculture and dairy products and also throughout the world with pleasant weather and huge global financial and property losses control.
- x. The Eurasian Climate Train promoted by the blockage of GAC Freon has already smothered Pakistan, Europe, Russia (western Eurasia) with extreme heatwaves, wildfires

and resulting in heat-based disasters and its tail end had 2<sup>nd</sup> round of disaster through monster flash floods in Pakistan and in a few other countries. In the near future these calamities will intensify too much in this western Eurasia and are going to smother Eastern Russia, Former Russian States, China, Magnolia, Korea and Japan with the heat terrible round and India and Middle East with both the rounds like that of Pakistan.

- xi. The winter rains, wind and snowstorms in Europe, Russia, China and Pakistan etc. are brought by northern westerly as a result of heatwaves and wildfires in Australia and Brazil triggered by the IBWT elevated GHT as pointed out by Nazeer (2022a).
- xii. In the global calamities of years 2022 and 2023 peak active years in 37 or two 18.6 years lunar nodal precession cycles as 3-4 years on Northern and 5-6 years on Southern Hemisphere have the boosting role through IAW. Scariest flash floods in Southern Hemisphere in the wake of GHC, GHT and wildfires are boosted by these lunar cycles.
- xiii. The Venus transits have much boosting role in IAW navigation as compared to its lapses, but these are yet far away in June of years 2247 and 2255 on the Northern Hemisphere and in December 2109 and 2117 on the Southern in their cycle of 243 years. These have continuous enhanced drag in about 4 years around extremely critical years 2109 and 2247 if GHC and GHT scenario is not controlled.
- xiv. Heat energy drainage and disaster through wildfire must be forced to its beneficial use as pointed out above along with proper measures for wildfire controls.

### Recommendations

Global heat and temperature buildup activity is a deadly global issue, continuously boosting all the Global Climate Calamities (GCC) (Nazeer, 2020a). An emergency needs as a preemptive measure before the ECT and all IAW trains initiation is that all irrigation water supply to Pakistan from rivers Chenab, Ravi and Sutlej be immediately made available as per needs with total control and management by Pakistan so as to make its all area fully irrigated right from March to December. Also, divinely created unique GAC be immediately mobilized by

- a. The immediate reversion of IBWT (the restart of GAC-1).
- b. All the infrastructures of all water storage dams (450-500 MAF capacity), channels for diversion of floods water to storage dams, irrigation and hydropower generation systems be immediately completed by International Community under UNO supervision. This will initiate GAC-2 operation.
- c. The areas of Thar, Thal, Chulistan and Baluchistan be developed for irrigation with all needed canals and all possible Dams in Baluchistan, other than stated above as 450-500 MAF. This will initiate GAC-3 operation.
- d. Systematic Diversion of Wildfires fuel to the power plants and other useful uses be managed immediately throughout the World.
- e. Wildfires be controlled and contained both in time and space with comprehensive scientific measures.
- f. UNO should manage this all at all levels and arrange finances for this from all countries and institution as per their role in boosting GHC and GHT. Thus, total finances required for this and those to be compensated be collected as
  - i. The  $14.235 \times 100 / 16.48 = 86.38\%$  of the total expenses from WB, USA, UK, France, Germany, Australia and India. These should distribute this among themselves as their role in IBWT and benefits gained.
  - ii. The  $2.245 \times 100 / 16.48 = 13.62\%$  of the total expenses from all the countries as per their role in 2.245 ZJ heat addition through burning of all fuels, wildfires, greenhouse productions and other contributors.
- g. Loss borne by Pakistan be compensated on actuals bases along with other affected too.

**Acknowledgement**

Author is highly thankful to all who helped in preparation of this paper including the authors of the papers which provided the information forming bases for this and also to all those who keenly go through it and alert the world leaders of the criticality described and recommendations.

**Abbreviations**

| Abbreviations | Stands for                            |
|---------------|---------------------------------------|
| GCC           | Global Climate Calamities             |
| GAC           | Global Air Conditioners               |
| GHC           | Global Heat Contents                  |
| GHT           | GHC and Temperature                   |
| IAW           | Indian Air Wheels                     |
| IBWT          | Indus Basin Water Treaty              |
| UNO           | United Nations Organizations          |
| WB            | World Bank                            |
| CRT           | Chulistan, Rajasthan and Thar deserts |
| ECT           | Eurasian Climate Trains               |
| ZJ            | Zeta Joules= $10^{21}$ Joule's heat   |
| NAH           | North Atlantic Tropical Hurricanes    |

**References**

100 Years Frequency of North Atlantic Hurricanes. (2015). 2015 Hurricane Update with NASA's Dr Tim Hall. <https://insurancelinked.com/2015-hurricane-update-with-nasas-dr-tim-hall/>

Kelly, P., Ruby Leung, L., Balaguru, K. & Xu, W.W. (2019). Shape of Atlantic Tropical Cyclone Tracks and the Indian Monsoon. *Geographical Research Letter*, 46, 10,746-10,755.

Nazeer, M. M. (2019a). Major Culprit behind Horrible Steep Rise of Global Heat Contents and Temperature since 1973 and Its Blockage Strategy. *International Journal of Scientific & Engineering Research*, 10, Paper ID: 10132594.

Nazeer, M. M. (2019b). Reversal of Terrible Global Heating and its Gang through Unique and Complete Water Evaporation and Precipitation Cycle of Pakistan. *International Journal of Scientific & Engineering Research*, 10, Paper ID: 10132180.

Nazeer, M. M. (2019c). North Atlantic Hurricanes Take Birth in India and can be Moderated Only in Pakistan by Reversion of their Agitator, the Indus Water Treaty of 1960. *International Journal of Scientific & Engineering Research*, 10, 461-481.

Nazeer, M. M. (2019d). Mobilization of Water Cycle and Its Persian Air Wheel Heat Pump to Overcome Global Heating and Its Resulting Terrible Environmental Problems. *Open Access Library Journal*, 6, e5445. <https://doi.org/10.4236/oalib.1105445>

Nazeer, M. M. (2019e). Tragic Aftermath of Californian Jungle Fire and Hawaiian Volcano Out-Burst, a Warning about Persistently Rising Global Warming, Resulting into High Rated Disaster's Chain. *Open Access Library Journal*, 6, e5118. <https://doi.org/10.4236/oalib.1105118>

Nazeer, M. M. (2020a). New Insights in Role of Indian Subcontinent in Nurture of Global Climate and North Atlantic Hurricanes with an only Window for Their Calamities Control. *Open Access Library Journal*, 7, e6424. <https://doi.org/10.4236/oalib.1106424>

- Nazeer, M. M. (2020b). Review of World Bank Two Most Terrible Moves Resulting in All Ever Increasing, Terrible Climate Calamities over the Entire Earth Globe along with Continuous Huge Disasters in Pakistan. *Open Access Library Journal*, 7, e6750. <https://doi.org/10.4236/oalib.1106750>
- Nazeer, M. M. (2020c). Solar, Lunar and Venus Roles in Some Global Climatic Events. *Open Access Library Journal*, 7, e6419. <https://doi.org/10.4236/oalib.1106419>
- Nazeer, M. M. (2020d). Indian Monsoons Roaming in Time and Space and Global Climate Calamities Control Vitalities. *Open Access Library Journal*, 7, e6568. <https://doi.org/10.4236/oalib.1106568>
- Nazeer, M. M. (2022a). Unveiled Major Global Climate Calamities Hot Spots with their Tracks, Targets and lone alone Reversion Director. *Open Access Library Journal*, 9, e8953. <https://doi.org/10.4236/oalib.1108953>
- Nazeer, M. M. (2022b). God's Blessings and Forced Guidance to Global Climate Control Strategy through Human's Blunders. *International Journal of Scientific & Engineering Research*, 13(8), Paper ID -I0187706.
- Tropical cyclones: impacts, the link to climate change and adaptation (n.d.). Climate Analytics. Retrieved from <https://climateanalytics.org/briefings/tropical-cyclones-impacts-the-link-to-climate-change-and-adaptation>